

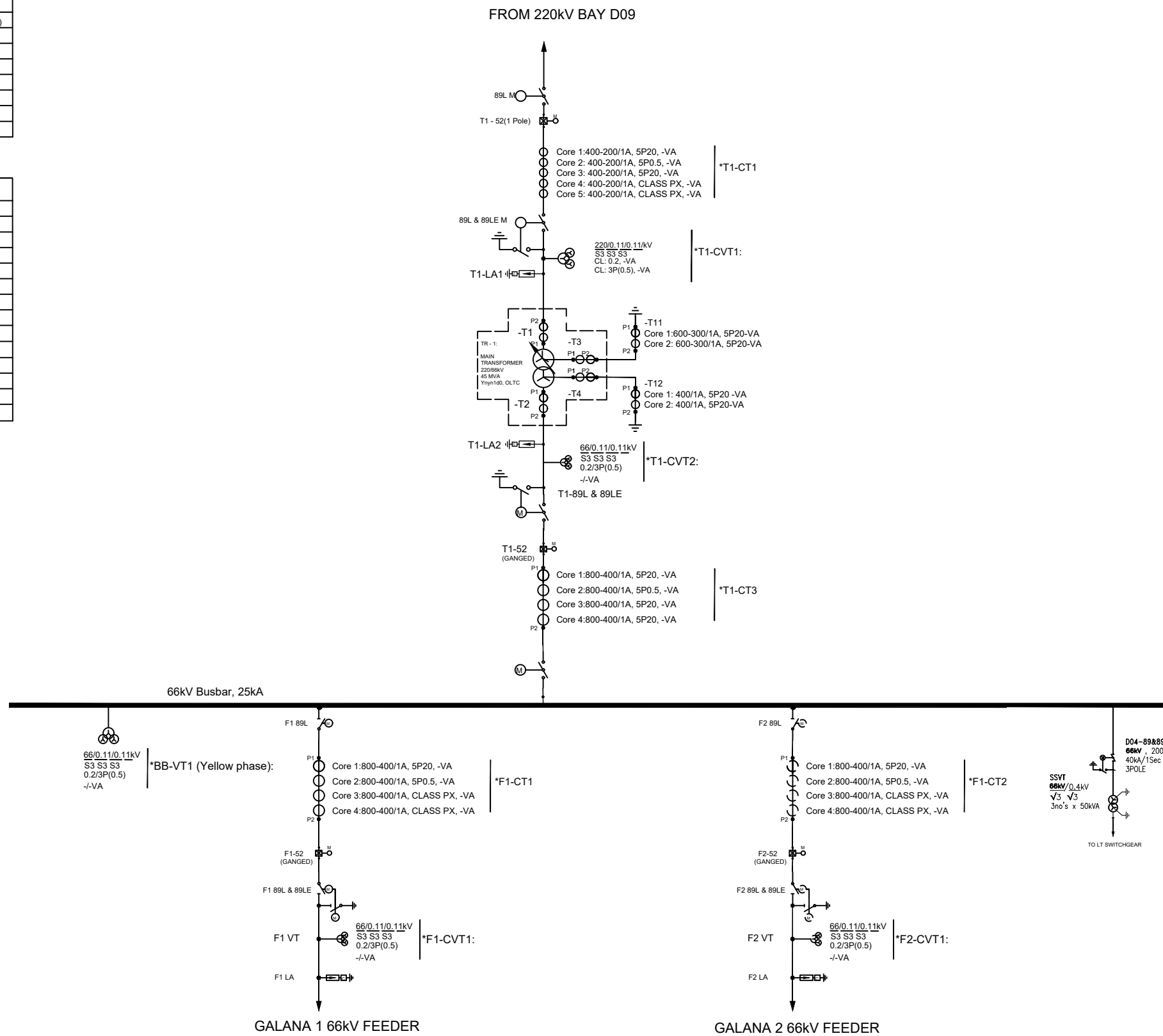
LEGEND:

SL. NO.	SYMBOL	DESCRIPTION
01		LIGHTNING ARRESTOR WITH SURGE COUNTER (LA)
02		CAPACITIVE VOLTAGE TRANSFORMER (CVT)
03		ELECTRICAL OPERATED ISOLATOR WITHOUT E/S
04		ELECTRICAL OPERATED ISOLATOR WITH 1 E/S
05		EARTHING SWITCH MOTOR OPERATED
06		AIR CIRCUIT BREAKER
07		CURRENT TRANSFORMER
08		SF6 CIRCUIT BREAKER (CB)

CT	CORES	RATIO, CLASS
T1	CORE 1	400-200/1A, CLASS 5P20
	CORE 2	400-200/1A, CLASS 5P20
T2	CORE 1	800-400/1A, CLASS 5P20
	CORE 2	800-400/1A, CLASS 5P20
T3	CORE 1	600-300/1A, CLASS 5P20
	CORE 2	600-300/1A, CLASS PX
T4	CORE 1	1000/1A, CLASS 5P20
	CORE 2	1000/1A, CLASS PX
T5	CORE 1	200/1A, CLASS PX
	CORE 2	200/1A, CLASS 5P20
T21	CORE 1	500/1A, CLASS 5P20
	CORE 2	200/1A, CLASS PX
T22	CORE 1	500/1A, CLASS 5P20
	CORE 2	500/1A, CLASS PX

NOTES

- THIS DRAWING IS FOR BIDDING PURPOSES ONLY
- FINAL EQUIPMENT NOMENCLATURE WILL BE PROVIDED AT A LATER STAGE
- THE BURDEN OF CTs AND CVT/VTs SHALL BE FINALIZED DURING DETAILED DESIGN BY THE EPC CONTRACTOR SUBJECT TO APPROVAL BY THE CLIENT/CLIENT REPRESENTATIVE
- THE MAIN AND AUXILIARY TRANSFORMERS SHALL HAVE BUSHING CTs AS PER THE SLD.



CONSULTANT/CONTRACTOR:

DESIGNED BY:	TSP
CHECKED BY:	HS
APPROVED BY:	AMM
PRESENTED BY:	TSP

REVISION	
N°	DESCRIPTION
1	DATE
2	20/11/23 CHANGE OF TX RATING

PROJECT
220/66 kV BAY EXTENSION AT WERU SUBSTATION SLD

SCALE	UNITS:	-
NOT TO SCALE	DATE:	12/05/2023
	DRAWING NO:	XX/XXX/XXX
	SHEET NO:	000